

KARIBAN

REFERENCE : K402

SIZES : 6/8_8/10_10/12_12/14

COMPOSITION :

Fabric 1 : 3 layers Softshell (Plain weave/Micropolar fleece)
Polyester / Elastane 95/5 - 300 .

WEIGHT :

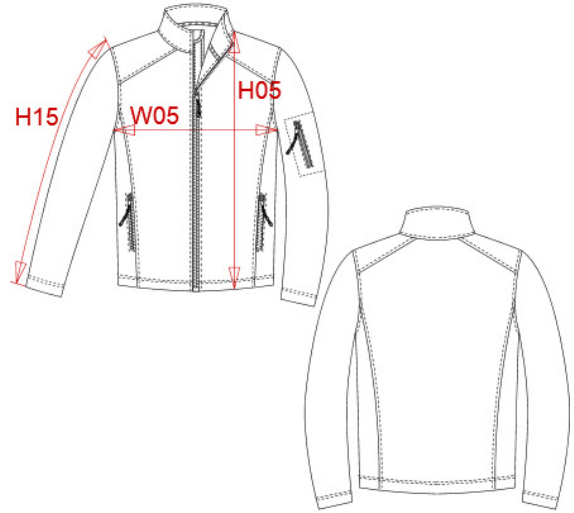
Fabric 1 : 300 gsm

TECHNICAL DETAIL :

3 layers bonded (Outer: Woven plain weave/Performance membrane/Inner: Anti pilling micropolar fleece) BR:
3000gsm/24h / WP: 8000mm

ARTICLE WEIGHT :

523 gr/pc



DESCRIPTION	
Français :	Veste enfant softshell
English :	Kids soft shell jacket
Nederlands :	Kids soft shell
Deutsch :	Kinder soft shell jacke
Español :	Chaqueta softshell para niño
Italiano :	Giacca bambino softshell
Português :	Blusão softshell de criança

COLORS	PANTONE SERIGRAPHIE
Black	Black
Red	200C
Navy	433C
Aqua blue	7690C

MEASUREMENT						
Description	6/8	8/10	10/12	12/14		
W05 1/2 largeur poitrine avec zip / 1/2 chest width with zipper	40,05	43	46	49		
H05 Hauteur totale devant / Front total height	50,70	55,50	60,35	65,15		
H15 Longueur dessus de manche / Sleeve length	45	49,05	53,10	57,15		

CARE LABEL				

PACKING	
Box	10 pcs / box 6/8 => L:60cm W:40cm H:17cm NW:3kg GW:4.7kg 8/10 =>L:60cm W:40cm H:17cm NW:3.3kg GW:4.9kg 10/12 =>L:60cm W:40cm H:17cm NW:3.90kg GW:5.5.3kg 12/14 =>L:60cm W:40cm H:17cm NW:4.3kg GW:5.8kg